

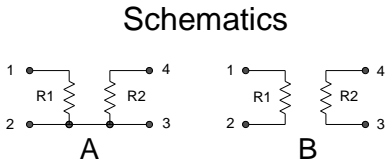
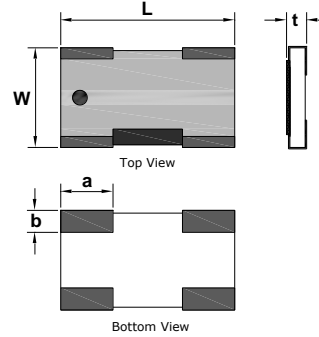


PR9544-SERIES

ULTRA PRECISION THIN FILM CHIP NETWORK

PRECISION RESISTIVE PRODUCTS, INC.
 202 MACK LANE, MEDIAPOLIS, IA 52637
 (319)394-9131 FAX (319)394-9280
 E-Mail info@prpinc.com
 PRP HOME PAGE <http://www.prpinc.com>

- High Density Package/Reduced PCB Area
- Low Current Noise
- Excellent TCR & Resistance Tracking
- Popular Voltage Divider Configurations
- Precision Thin Film Resistance Elements
- Custom Value Combinations
- Packaging is Tape & Reel
1000pcs & 5000pcs



Dimensions inches(mm)

Style	L	W	a	b	t
PR9544 0805	0.079 ±0.008 (2.00 ±0.20)	0.049 ±0.008 (1.25 ±0.20)	0.024 ±0.008 (0.60 ±0.20)	0.014 ±0.008 (0.35 ±0.20)	0.016 ±0.004 (0.35 ±0.20)
PR9544 1206	0.126 ±0.008 (3.20 ±0.20)	0.063 ±0.008 (1.60 ±0.20)	0.039 ±0.008 (1.00 ±0.20)	0.016 ±0.008 (0.40 ±0.20)	0.016 ±0.008 (0.40 ±0.20)
PR9544 1210	0.126 ±0.008 (3.20 ±0.20)	0.098 ±0.008 (2.50 ±0.20)	0.039 ±0.008 (1.00 ±0.20)	0.016 ±0.008 (0.40 ±0.20)	0.024 ±0.008 (0.60 ±0.20)

Specifications

Style	Power Ratings	Resistance Range	Resistance Tolerance				Temperature Coefficient *			
			Absolute Tolerance	Ratio Match			Absolute TCR	TCR Tracking		
				Resistance Ratio = 1	Resistance Ratio <1 to ≤ 100	Resistance Ratio <100 to ≤ 500		Resistance Ratio = 1	Resistance Ratio <1 to ≤ 100	Resistance Ratio <100 to ≤ 500
PR9544 0805	0.05W/ Element 0.1W/ Package	100R – 300R	±0.1%(B) ±0.5%(D)	±0.02%(P) ±0.05%(W) ±0.1%(B) ±0.5%(D)	±0.05%(W) ±0.1%(B) ±0.5%(D)	–	±10ppm/°C(N) ±25ppm/°C(P)	±1ppm/°C(X) ±2ppm/°C(W) ±5ppm/°C(V)	±2ppm/°C(W) ±5ppm/°C(V)	–
		300R – 100K	±0.05%(W) ±0.1%(B) ±0.5%(D)	±0.01%(L) ±0.02%(P) ±0.05%(W) ±0.1%(B) ±0.5%(D)	±0.05%(W) ±0.1%(B) ±0.5%(D)	–	±5ppm/°C(V) ±10ppm/°C(N) ±25ppm/°C(P)	±1ppm/°C(X) ±2ppm/°C(W) ±5ppm/°C(V)	±1ppm/°C(X) ±2ppm/°C(W) ±5ppm/°C(V)	±2ppm/°C(W) ±5ppm/°C(V)
PR9544 1206	0.083W/ Element 0.125W/ Package	100R – 300R	±0.1%(B) ±0.5%(D)	±0.02%(P) ±0.05%(W) ±0.1%(B) ±0.5%(D)	±0.05%(W) ±0.1%(B) ±0.5%(D)	–	±10ppm/°C(N) ±25ppm/°C(P)	±1ppm/°C(X) ±2ppm/°C(W) ±5ppm/°C(V)	±2ppm/°C(W) ±5ppm/°C(V)	–
		300R – 500K	±0.05%(W) ±0.1%(B) ±0.5%(D)	±0.01%(L) ±0.02%(P) ±0.05%(W) ±0.1%(B) ±0.5%(D)	±0.05%(W) ±0.1%(B) ±0.5%(D)	–	±5ppm/°C(V) ±10ppm/°C(N) ±25ppm/°C(P)	±1ppm/°C(X) ±2ppm/°C(W) ±5ppm/°C(V)	±1ppm/°C(X) ±2ppm/°C(W) ±5ppm/°C(V)	±2ppm/°C(W) ±5ppm/°C(V)
PR9544 1210	0.1W/ Element 0.2W/ Package	100R – 300R	±0.1%(B) ±0.5%(D)	±0.02%(P) ±0.05%(W) ±0.1%(B) ±0.5%(D)	±0.05%(W) ±0.1%(B) ±0.5%(D)	–	±10ppm/°C(N) ±25ppm/°C(P)	±1ppm/°C(X) ±2ppm/°C(W) ±5ppm/°C(V)	±2ppm/°C(W) ±5ppm/°C(V)	–
		300R – 500K	±0.05%(W) ±0.1%(B) ±0.5%(D)	±0.01%(L) ±0.02%(P) ±0.05%(W) ±0.1%(B) ±0.5%(D)	±0.05%(W) ±0.1%(B) ±0.5%(D)	–	±5ppm/°C(V) ±10ppm/°C(N) ±25ppm/°C(P)	±1ppm/°C(X) ±2ppm/°C(W) ±5ppm/°C(V)	±1ppm/°C(X) ±2ppm/°C(W) ±5ppm/°C(V)	±2ppm/°C(W) ±5ppm/°C(V)

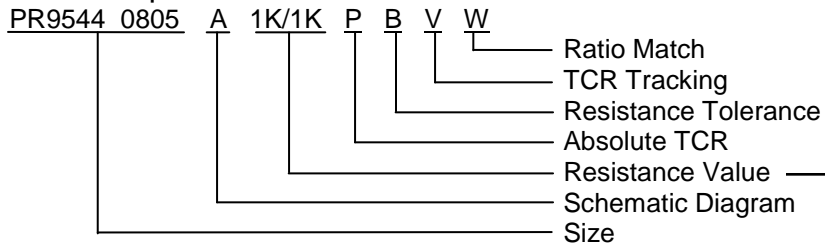
* TCR guaranteed range: -20°C to 125°C

Performance Data

Test Item	Performance		Test Method
	Absolute Tolerance	Relative Tolerance	
Load Life	$\pm(0.05\%+0.01\Omega)$	$\pm 0.02\%$	85°C rated voltage 90 min. on – 30 min. off cycle, 1,000 hrs.
Moisture Resistance	$\pm(0.05\%+0.01\Omega)$	$\pm 0.02\%$	85°C 85% RH 1/10 rated power 90 min. on – 30 min. off cycle, 1,000 hrs.
High Temp. Exposure	$\pm(0.05\%+0.01\Omega)$	$\pm 0.02\%$	155°C, no bias, 100 hrs.
Short Time Overload	$\pm(0.05\%+0.01\Omega)$	$\pm 0.02\%$	2.5 times rated voltage for 5 sec.
Resistance to Soldering Heat	$\pm(0.05\%+0.01\Omega)$	$\pm 0.02\%$	260°C $\pm 5^\circ\text{C}$ for 10 sec. reflow
Thermal Shock	$\pm(0.05\%+0.01\Omega)$	$\pm 0.02\%$	-55°C to +125°C for 1000 cycles

How to Order

Sample Part



Examples
100R/100R : 100 / 100
10K/20K : 10K / 20K



DEDICATION TO EXCELLENCE

Add "T" at the end of the Case Size portion of the part number for lead free termination.